

produce & better product to customers

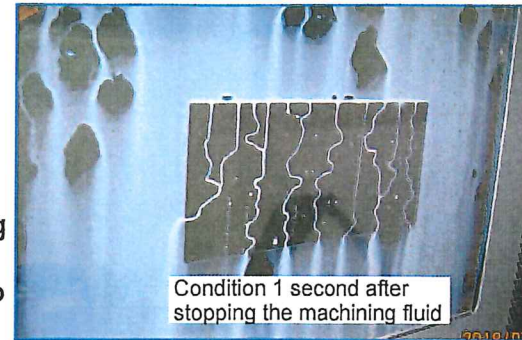
## Water-soluble machining fluid-repelling film

# MADOSUKE

**Hard coating type  
water-repellent film**

MDS-700/MDS-400/MDS-300

Simply apply the film to the inside of processing machine safety windows (splashguards). Water-soluble machining fluid scattering onto to the safety window is completely thrown off.



### [Features]

- The film is used by applying it to the safety windows (splashguards) of machining centers and NC lathes.
- MADOSUKE is a water-soluble cutting fluid-repelling film.
- The film quickly throws off emulsion cutting fluids which are scattered onto the window. (See note below)
- Because the film has a hard coat finish, it also helps to reduce damage to the safety window caused by fractured cutter pieces flying up on to the window.

**Note:** Depending on the customer's usage conditions, the film may become scratched due to chip scattering.

### [Prices]

#### Three MADOSUKE film types

Size selection (Select the size that extends to the location which allows viewing from the highest position on the inside of the window.)

- |                               |              |   |
|-------------------------------|--------------|---|
| • MDS-700 Size: 520mm x 700mm | <b>NEW</b> ⇒ | • MDS-260 Size: 260mm x 200mm (3 - film pack) |
| • MDS-400 Size: 520mm x 400mm |              | • MDS-200 Size: 200mm x 200mm (3 - film pack) |
| • MDS-300 Size: 520mm x 300mm |              | • MDS-140 Size: 140mm x 200mm (3 - film pack) |

### Optional tape

- Adhesive tape (white) (30mm width x 50m)
  - Transparent tape (30mm width x 50m)
- This tape absorbs residual oils and sticks strongly. Any remaining tape can be used as line tape for floors.

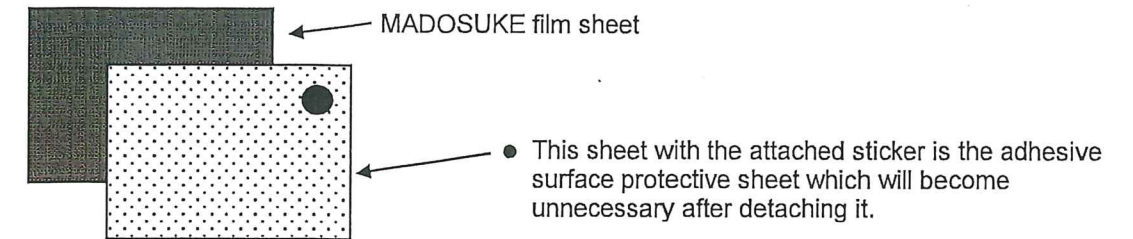
See the reverse side for an explanation of the usage method.

## Method of use

(1) To protect the adhesive surface, MADOSUKE is made up of two layered sheets.

How to tell the difference between the sheets

- The sheet which has the attached sticker is the one that will become unnecessary after detachment.



If you become unsure which sheet is the MADOSUKE film, the sheet which can be written on using an oil-based marker pen is the unnecessary protective sheet.

(2) Apply the film to the inside of the splashguard.

Before applying the film, adequately clean the application surface with alcohol.

(3) Apply the MADOSUKE film after moistening the application surface such as by spraying water on it.

**If possible, apply the MADOSUKE film to the safety window (splashguard) starting from the top of the sheet.**

Apply the film while squeezing out trapped water and air bubbles using a rubber squeegee.

(4) After applying the film, affix oil-resistant tape to the upper part and side parts of the MADOSUKE film to fix it.

(5) Depending on the frequency of use, clouding of the film may occur. At this time, please wash the film using an agent such as a neutral detergent. If chips are attached to the film, use an air blower to blow off the chips then wipe the film clean before washing it with the detergent.

(6) Although the film has undergone hard coat processing, it will become finely scratched through long-period use. According to the condition, please replace the film with a new sheet.

Selling Office

Total sales agency

**NMC Co., Ltd** URL <http://www.kk-nmc.jp>

Head Office:4-14-27  
Ogawa Nishimachi, Kodaira-shi, Tokyo, 187-0035, Japan

Kobe sales office:6-9  
Kobe Fashion Mart 6C-08, Koyochi-naka, Higashinada-ku, Kobe-shi,  
Hyogo Pref. 658-0032, Japan

Fukuoka sales office:3-2-21  
Nishiharamachi, Hakata-ku, Fukuoka-shi, Fukuoka Pref. 812-0873, Japan

Nagoya Office:1-17-13  
Meikyo Bldg 2F, Naka-ku, Nishiki, Nagoya-shi, Aichi Pref. 460-0003, Japan